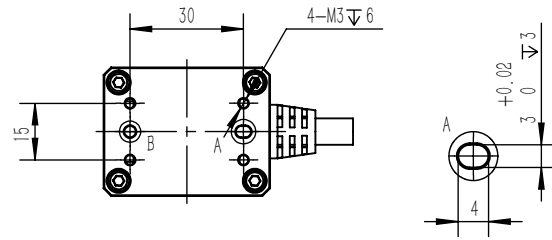
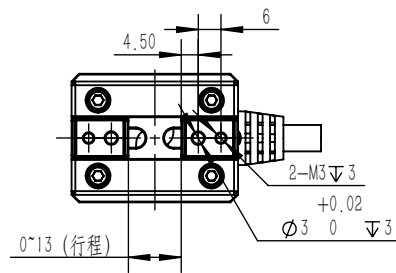
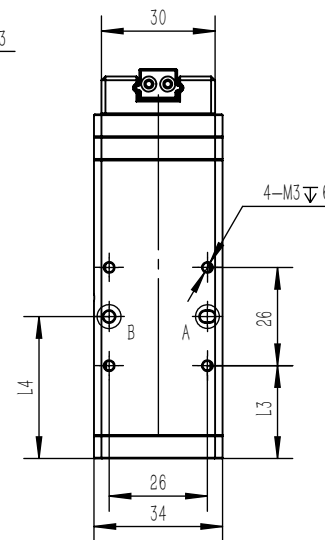
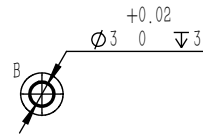
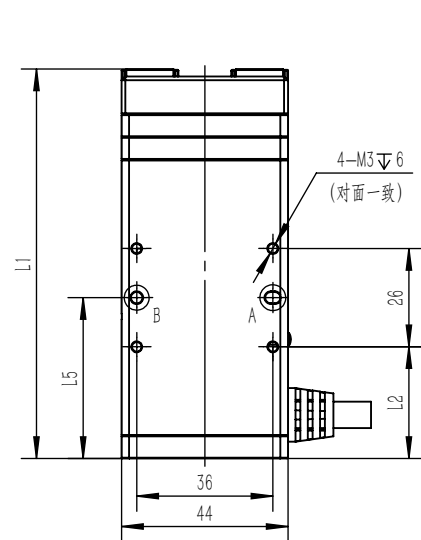
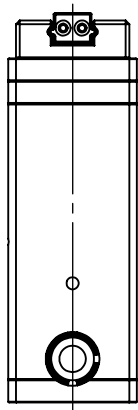


单位: mm



类型	S	L
L1	103	115
L2	29.5	35.5
L3	24.5	30.5
L4	37.5	43.5
L5	42.5	48.5



安装说明

- 1、主体固定时, 请使用同一安装面上的所有螺丝孔固定;
- 2、拧紧螺栓时, 不得超过螺纹孔深度。